

# The Distributor

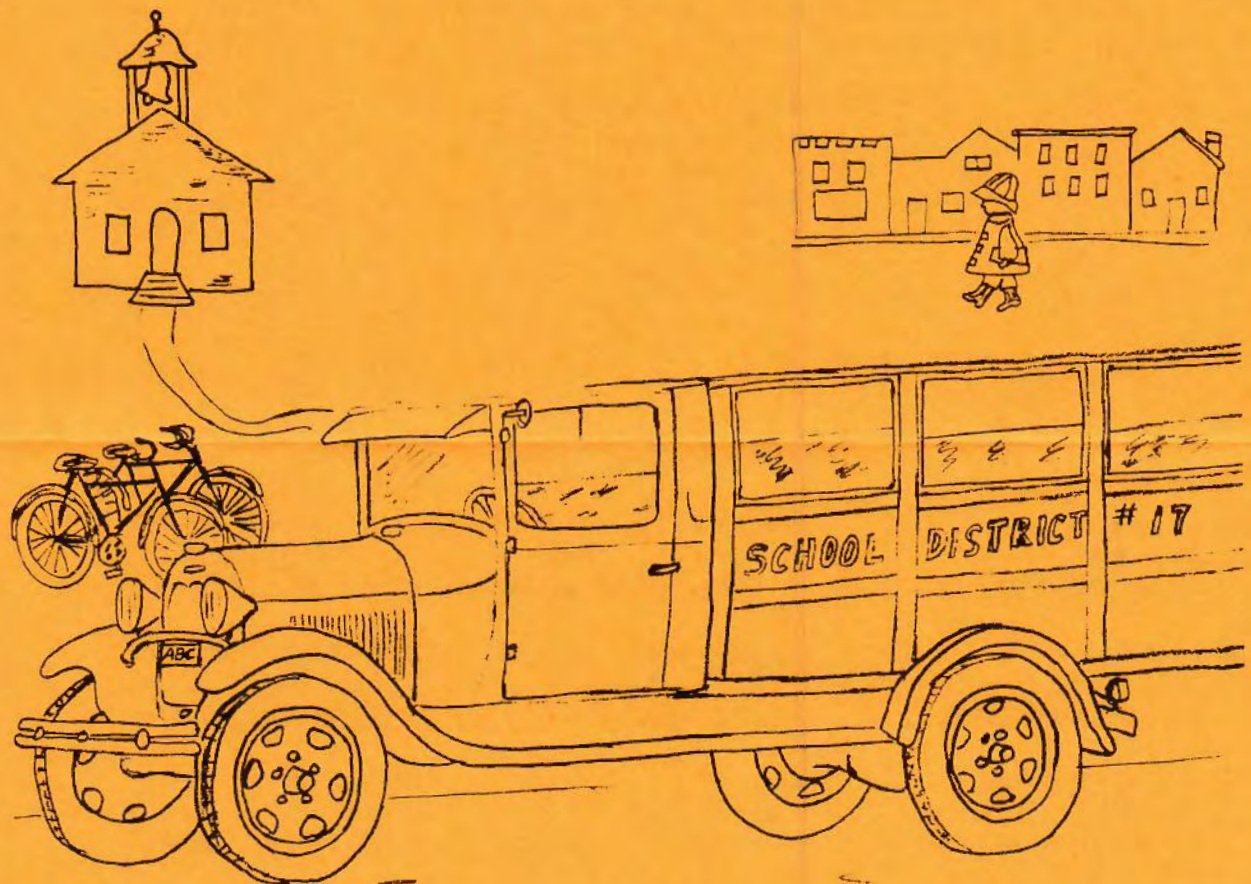
## Orange County Model A Ford Club

VOLUME XXIX SEPTEMBER 1989

EDITOR: JIM KHALAF

ISSUE 9

PUBLISHERS: BOB & KARYN SITTER



Willet / 81'

TOURS, SPECIAL EVENTS, AND SWAP MEETS

September      2: All Ford picnic & car show - La Palma Park  
8-10: Rim of the world tour  
14: General Meeting - Hart Park 6:30  
17: Swap meet - Paradise Valley model A  
Riverside City College  
21: Board Of Directors Meeting - Khalaf's at 7:30  
22-24: Three ring circus meet - San Diego

October          7: Progressive Dinner  
15: Irvine Regional park  
15: Pomona swap meet  
20-22: Southern Ca Regional meet - Palm Springs

BOARD OF DIRECTORS

President  
Jim Marsh  
(714) 531-7237

Secretary  
Terry Lucas  
(714) 633-0390

Treasurer  
Bob Kelley  
(714) 642-4367

Activities  
Joe Wavra  
(714) 549-2881

Activities  
Paul Steed  
(714) 960-7381

Technical Advisor  
Lou Spielberger  
(714) 650-0974

Special Events  
Les White  
(714) 870-6417

Editor  
Jim Khalaf  
(714) 731-8064

Publishers  
Bob and Karen Sitter  
(714) 777-2486

## MOOSE's MESSAGE

Jim Marsh

Next year will be a very big year for us in the Model A Ford hobby. In July 8-14 in 1990 will be the 16th bi-annual Model A Ford Club Of America National Convention in San Diego. We are fortunate to once again, have a national meet so close to us. The last local national meet was the Queen Mary meet in 1974 in Long Beach. This is a great opportunity for us to attend a national meet.

They are expecting from 1000 to 1200 Model A's to show up for this event. The finest Model A's in the world will be in San Diego next July. I hope that we of the Orange County Chapter, will also be in attendance next July to show our cars and even offer a helping hand.

I will be scheduling Dr. Ingerson of the Diamond Tread Chapter to speak at one of our next meetings. He has a slide show and pitch that he has made to many of the MAFCA Chapters to promote the San Diego convention. This will give all of us an up-to-date status of the happenings for the 1990 convention.

An other thing that I would like to do, is schedule one or two of our seminars to be on Judging. We have some very fine cars in our club that will be shown at the National. We also have some very knowledgeable individuals that have the ability to help us critique the cars for the

changes that could be made to increase one's point total.

Also, you may want to get involved in helping to host this meet. The Queen Mary Chapter welcomes members and is most anxious for any help. Our club will have the "repair tent" and many women have signed up to help with registration.

We will continue to bring you the latest happenings on the National meet as they unfold.



THE END

## ON THE ROAD AGAIN

Paul Steed



A beach report !!! for those of you who couldn't make it to the beach party. There were 10 Model A's and about 50 party goers. The weather looked a little drab at the beginning of the day, but before 11 AM

the sun came out and it was a warm day. The dig was a Real blast. Could you imagine 18 adults and 6 kids digging in the sand like a cat in his sand box? There were great prizes for all (thanks to club and C.W. Moss).

I think Terry Lucas is candidate for the hard luck trophy of the month for wrenching his back loading water melons for the picnic. Terry and the family weren't able to attend.

See you at Hart park for our next meeting. I'm bringing hot dogs and sodas that were left over from the beach party.

We all had a great day at the beach !

#### Up-coming Tours

- Don't forget the RIM Of The World tour in Crestline September 8, 9, and 10.

- The Model A restore's club of San Diego is putting on their annual Three Ring Circus. It will take place September 22, 23, and 24. There will be a Gymkhana, Fashions and an abbreviated car judging. If you plan on staying overnight, reservations must be made by September 11.

There will be a tour to the event leaving Cocos at 405 Fwy and El Toro road at 7:00 AM sharp on September 23. The club would like to show our support to the San Diego Club as they have supported our events in previous years.

- Irvine Regional Park has invited us to participate in their event to be held on October 15 at Irvine Park.

- Don't forget to make plans and reservations for the So. California Regional tour in Palm Springs on October 20th thru 22nd. The desert is beautiful in October.

#### Progressive Dinner

The progressive dinner on October 7th will meet at the Orange Mall at 5:00 PM. Reservations are required. The cost is \$12 per couple. Call Joe Wavra for your reservations A.S.A.P. The first stop is the home of Jim and Diane Manos (map below).



#### GENERAL MEETING

The next General Meeting, September 14th, will be held at Hart Park at 6:30 PM.

Jim Marsh was informed that the we were not being charged

the correct amount of money at our regular meeting place and it will cost us an additional \$100 per month.

We are looking for a meeting place that is reasonable. If you know of any please let Jim or any other Board member know.

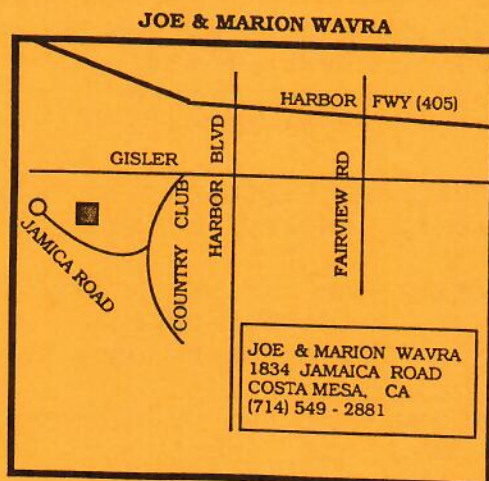
Paul Steed will bring the hot dogs and drinks. Please bring a small side dish.

### LET'S GET TECHNICAL

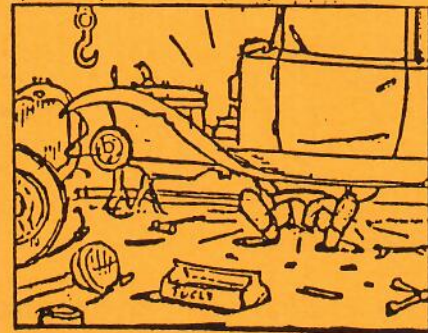
Lou Spielberger

The technical seminar at Terry Lucas's house on headlights was different, thanks Terry.

Our September seminar will be a film on breaks at Joe Wavra's house on September 15th at 7:30 (map below).



### A TIP FROM LOU



This month's tip will be on Model A don'ts.

1. Don't over-tighten head studs. This can cause warped head and water leaks. Use the recommended torque pressure and alternating pattern.
2. Don't forget to add a table spoon of engine oil to each cylinder before installing the head. This protects cylinder walls upon starting the engine.
3. Don't tighten water pump packing nut to tight. This could cause pump shaft to become scored.
4. Don't start up a new engine before you add engine oil to the distributor shaft hole in the head. This fills up the oil pan tray and helps to get oil to the rods in a hurry.
5. don't blame your tired old Model A engine for lose power at high speed. This could be caused by a weak camshaft spring. Replace with a new one.
6. Don't install head studs without cleaning out each hole first. Head studs should protrude 2 3/4 inches above the top of the engine.

## BOARD MEETING

The meeting was called to order at 7:45 PM. The secretary and treasurer's reports were read and approved. Joe and Paul reported on upcoming activities.

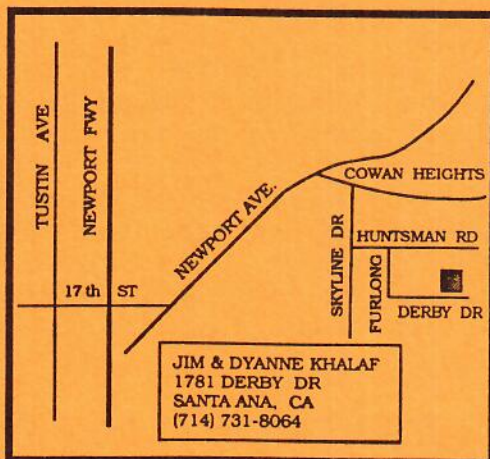
The board discussed the progressive dinner and the amount to be charged per couple. The board set \$12 dollars and additional expenses will be provided by the club.

Lou Spielberger reported that the upcoming technical seminar will be a film on brakes at Joe Wavra's house.

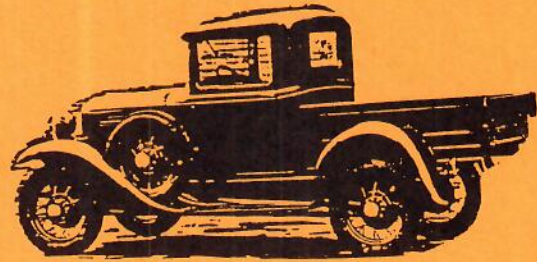
The September general meeting will be held at Hart Park as explained earlier.

The next board meeting will be at Jim Khalaf's house on September 21th at 7:30 PM (see map below).

### JIM & DYANNE KHALAF



JIM & DYANNE KHALAF  
1781 DERBY DR  
SANTA ANA, CA  
(714) 731-8064



## FOR SALE

1929 ROADSTER - Disassembled, partially restored, 100% complete. This is the most complete basket case I've ever seen.

Absolutely mint sheet metal; rebuilt short block, trans and rear end; most other chassis parts restored and painted to show condition.

Price - \$8,500  
Call - Glenn Johnson  
(714) 528-0891

2 Model A Owner Manuals & Parts List book-very good cond  
Call - Adam Lombard  
(818) 348-4520

31 Model A 20 passenger bus  
Excellent restoration project  
only one ever built  
Call - Pieter Dwinger  
(714) 633-1921

30-31 ERA Clothing (men women, kids), jewelry, purses, trunk.

Call: Joan (Krist) Kymes  
(714) 532-5806  
736 N. Cambridge, Orange

86 Dodge pickup D-50 import  
4 WD. A/C, Sport cab, cass,  
shell liner. Xlnt cond.

Asking: \$5,900  
Call: Merle McClellan  
(714) 770-7530

# 'A' Lines - JEWELRY

The jewelry of this period was much the same over the four years with new fads introduced from time to time. Much of the better jewelry worn was "Family" jewelry or antique. Costume jewelry was just beginning to come into its own.

The most popular necklace styles were chokers and ropes; pearl is a basic. Rhinestones, usually glued in place, made up a large part of the evening and dressier jewelry; popular items were link bracelets, clips, brooches, and necklaces. Crystals were also good for dress, while the glass and metal pieces were more for sport. The metal jewelry was lightweight, gold or silver in color, and the simple design was sometimes set with stones. Narrow bracelets seem the rule, usually in links, strung on elastic or wire wraps. Earrings were both the button and the dangling variety; pierced and screw fastenings are most shown. Necklace clasps were varied: interlocking rings, pinch safety clasps and the barrel screw. Belt slides and buckles were celluloid, metal, rhinestone and pearl; double metal and rhinestone buckles had a hook and bar connection.

In 1928 necklaces were both long and at neck base. The pearl ropes were the newest thing and crystal ropes were popular. They were found as long as sixty inches. Pearl chokers also came in three and four strands and in gold and pink shades. Great fake stones...often 1/2 inch in diameter were used on jewelry to match your dress. Wooden beads, natural or dyed, were ideal for sportswear. The carved ivory beads were also worn. Special touches were hatpins matching other jewelry and feather flowers at the shoulders. Also during 1928 costume flowers made of tiny beads were used on purses and hats as well as dresses. These were very colorful and the corsages of these beaded flowers strung on wire, were often backed by a gather of frill or a rosette of lace. These flowers continued in use for several years.

1929 saw coral jewelry make a comeback from grandmother's day. In choker or rope length, single strand or many strands twisted together, the smooth polished beads or root coral ranged in color from pale pink to oxblood. The newest fad for graduation presents was the Egyptian Scarab, a carved steatite, carnelian, emerald, lapis lazuli, ruby or bloodstone of two to six thousand years old. They were made into carved beetles (glazed and colored or natural and sandpitted), set in gold rings for men (other rings were silver or iron), pendants and brooches for women. One model was of pink coral with a thunderbird-type wings and balls of gold. In late fall, bronze beads were shown everywhere; two to twenty strands twisted together came in all lengths.

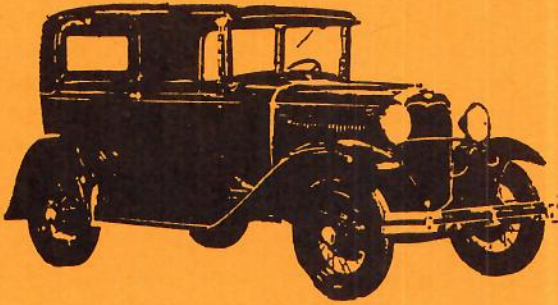
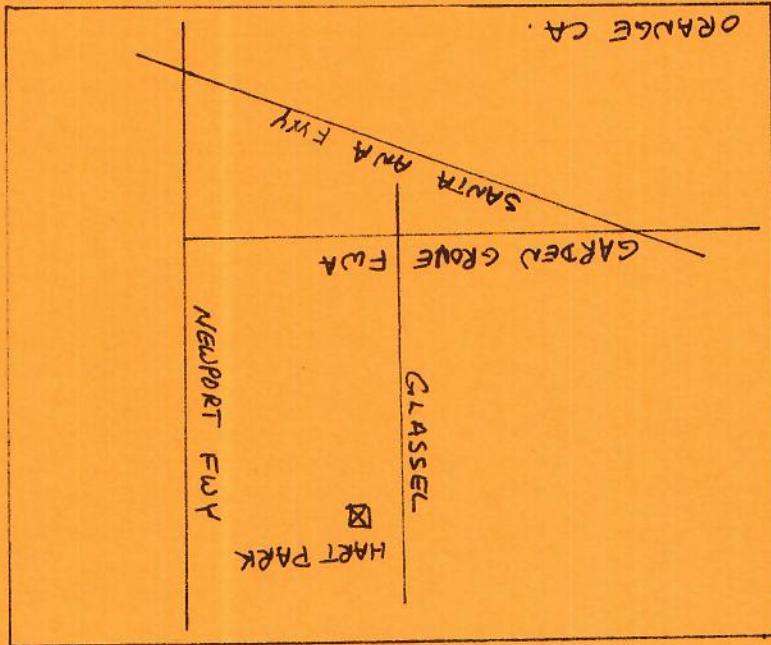
For 1930, tear-drops were the latest necklace and bracelet set. It was the shape of the bead that earned the name. Some had crystal rings connecting loops of the tear-drops, others are combined with tiny beads, and others have barrel shapes here and there. Many come of one color and some have every conceivable color. They are particularly well adapted for the sports and informal type of dress. Sets of jewelry were very popular for formal wear. A pin may be found in the combination instead of a necklace.

Men's jewelry had changed little. Many of the shirts still need separate buttons to close the front and to hold on the detachable collars. Also continued were scarf pins, vest and belt chain for watches and knives. Perhaps the newest styles were the come-a-part snap cuff links and spring tie clasps.

UMBRELLAS could be considered here. Those for sale by mail order were 23½ to 25½ inches long; most had a wooden rod and a plastic-type handle. In 1928 a picture was shown of a new collapsible umbrella, which folded into itself for a total length of about 14 inches.

One more very important fashion note: No one, but no one was complete without the famous hip flask.

Credits to Flap To Flip/Willamette Valley Chapter Salem, Oregon



MAFCA  
ORANGE COUNTY CHAPTER  
POST OFFICE BOX 10595  
SANTA ANA, CA 92711

**First Class Mail**